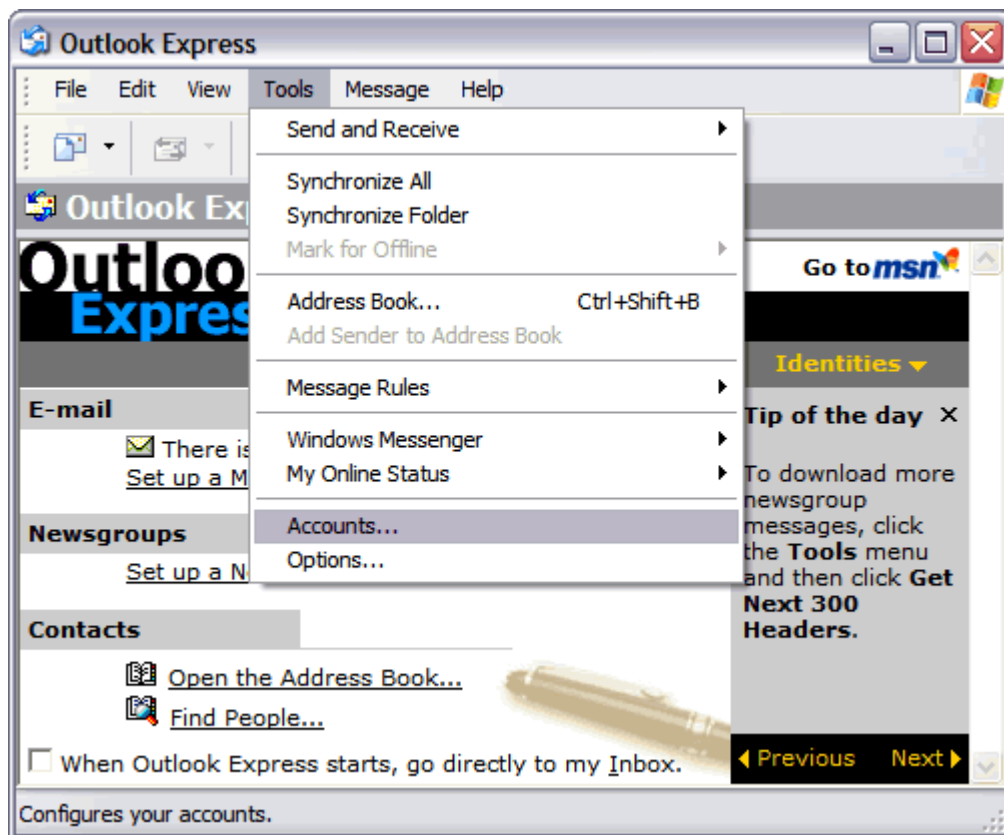


Setting Up Your E-mail in MS Outlook Express

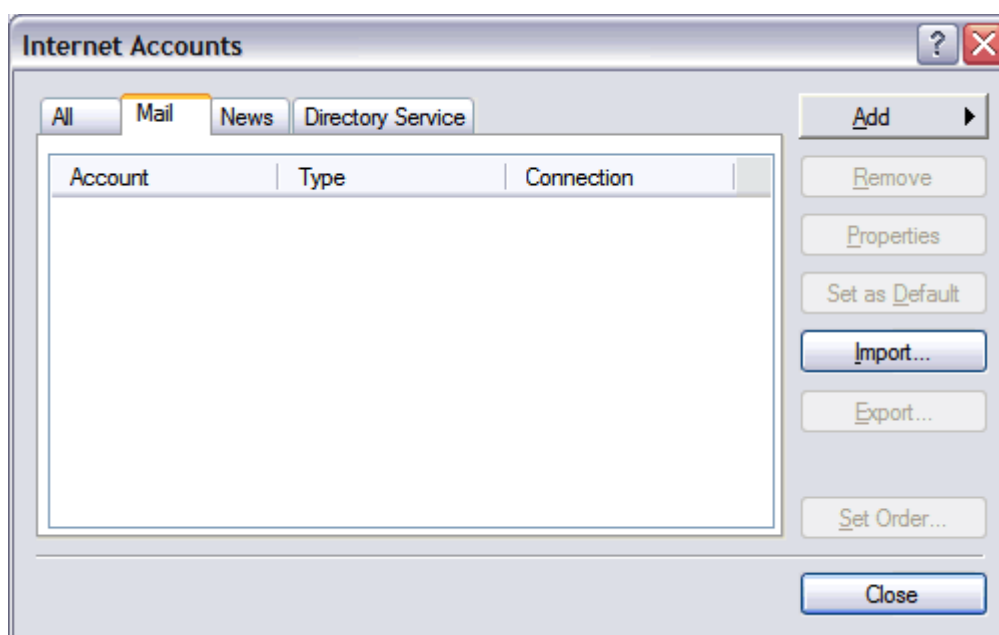
This tutorial shows you how to set up Microsoft Outlook Express 6 to work with your e-mail account. This tutorial focuses on setting up Microsoft Outlook Express 6, but these settings are similar in other versions of Microsoft Outlook Express. You can set up previous versions of Microsoft Outlook Express by using the settings in this tutorial.

To Set Up Your E-mail Account in Microsoft Outlook Express

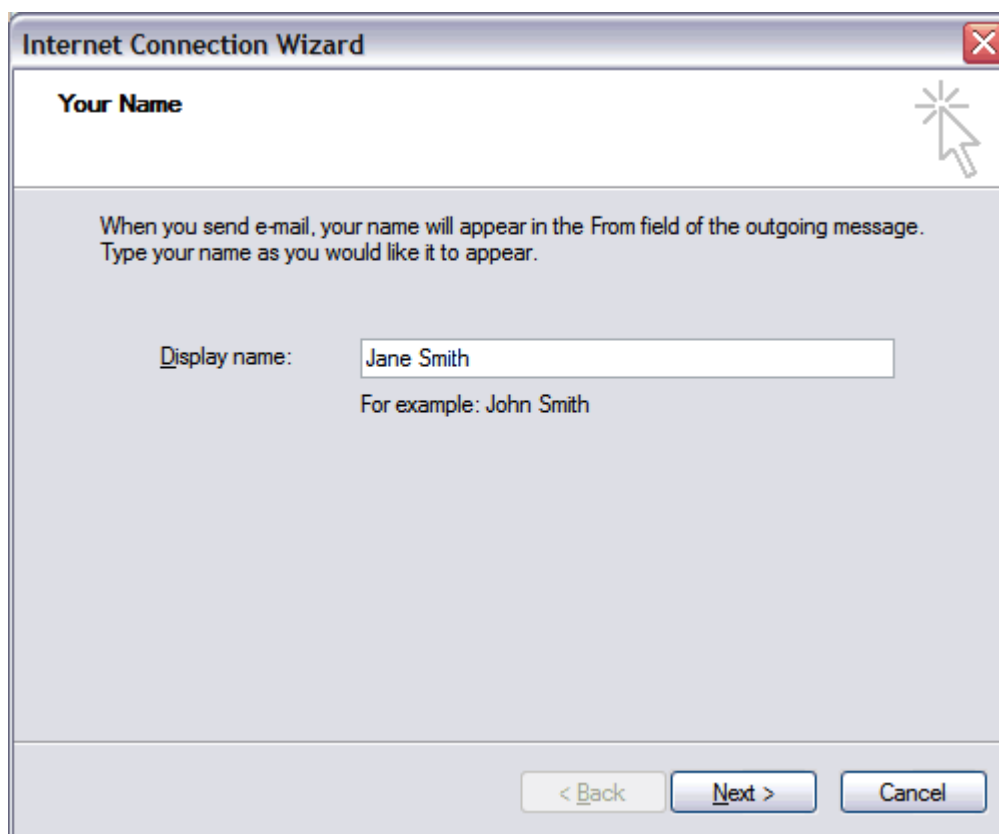
1. In Microsoft Outlook Express, from the Tools menu, select **Accounts**.



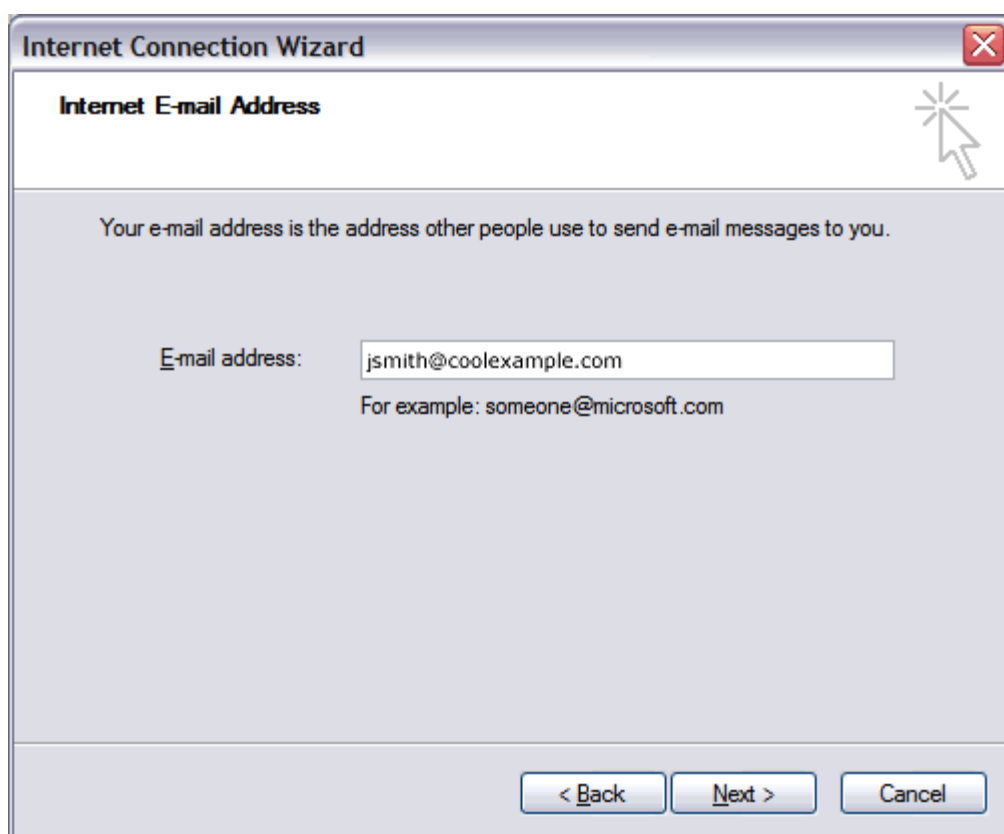
2. Go to the **Mail** tab and from the **Add** menu, select **Mail**.



3. In the Display Name field, enter you full name and click **Next**.



4. In the E-mail address field, enter your email address and click **Next**.



5. On the E-mail Server Names page, enter your information as follows:

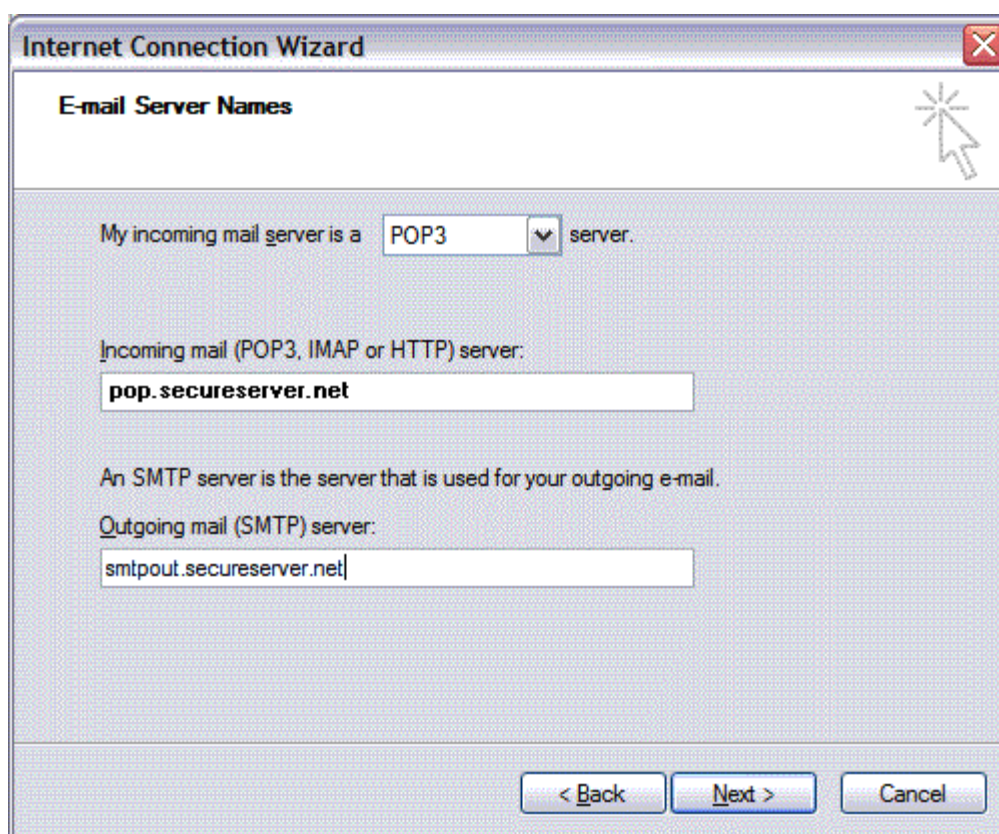
My incoming mail server is a
Select **POP3**.

Incoming mail (POP3, IMAP or HTTP) server
Type **pop.secureserver.net**.

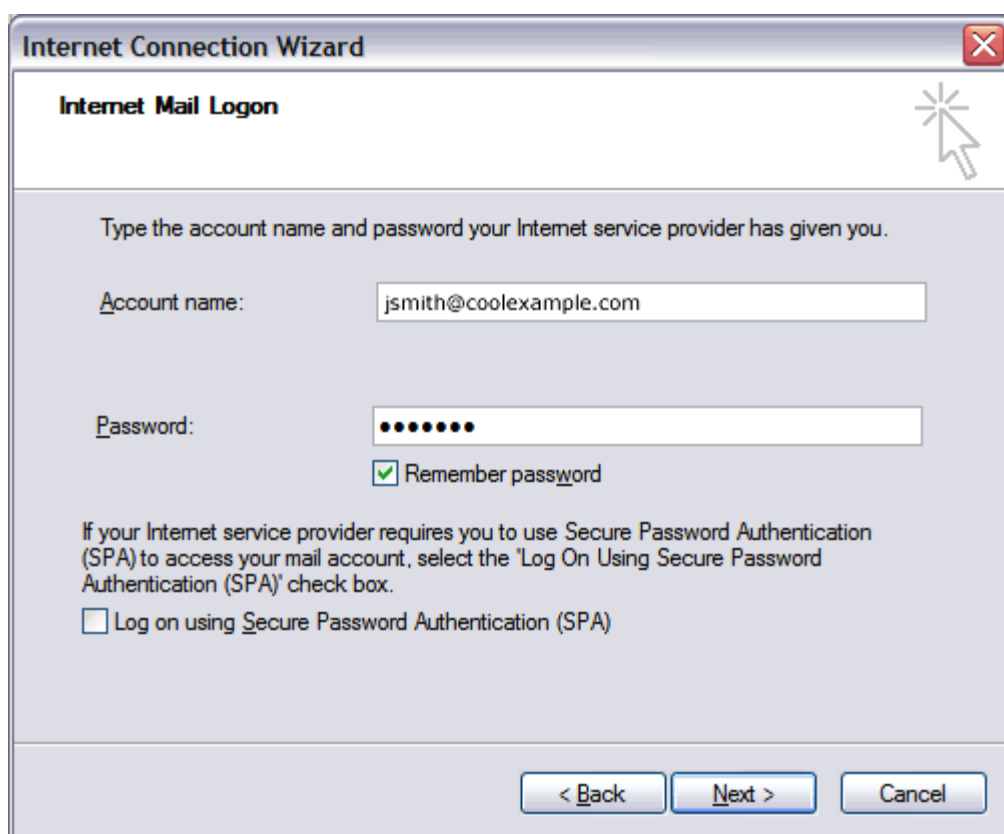
Outgoing mail (SMTP) server
Type **smtpout.secureserver.net**.

Click **Next**.

NOTE: "smtpout.secureserver.net" is an SMTP relay server. In order to use this server to send e-mails, you must first activate SMTP relay on your e-mail account. Log on to your Manage Email Accounts page to set up SMTP relay. If you do not have SMTP relay set up and your Internet Service Provider (ISP) allows it, you can use the outgoing mail server for your Internet Service Provider. Contact your Internet Service Provider to get this setting.



6. In the Account Name and Password fields, enter your email address and password, and then click **Next** .



The screenshot shows a dialog box titled "Internet Connection Wizard" with a sub-header "Internet Mail Logon". The main instruction reads: "Type the account name and password your Internet service provider has given you." There are two input fields: "Account name:" containing "jsmith@coolexample.com" and "Password:" containing seven dots. Below the password field is a checked checkbox labeled "Remember password". A paragraph of text explains: "If your Internet service provider requires you to use Secure Password Authentication (SPA) to access your mail account, select the 'Log On Using Secure Password Authentication (SPA)' check box." Below this is an unchecked checkbox labeled "Log on using Secure Password Authentication (SPA)". At the bottom are three buttons: "< Back", "Next >", and "Cancel".

Internet Connection Wizard

Internet Mail Logon

Type the account name and password your Internet service provider has given you.

Account name:

Password:

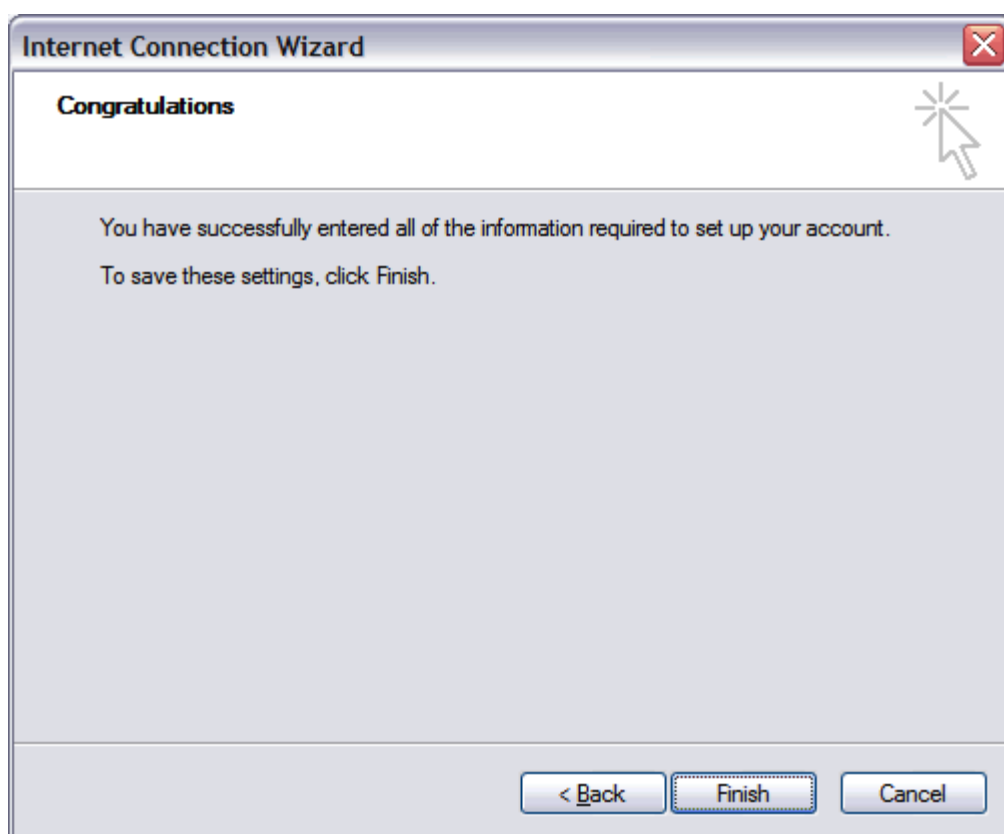
Remember password

If your Internet service provider requires you to use Secure Password Authentication (SPA) to access your mail account, select the 'Log On Using Secure Password Authentication (SPA)' check box.

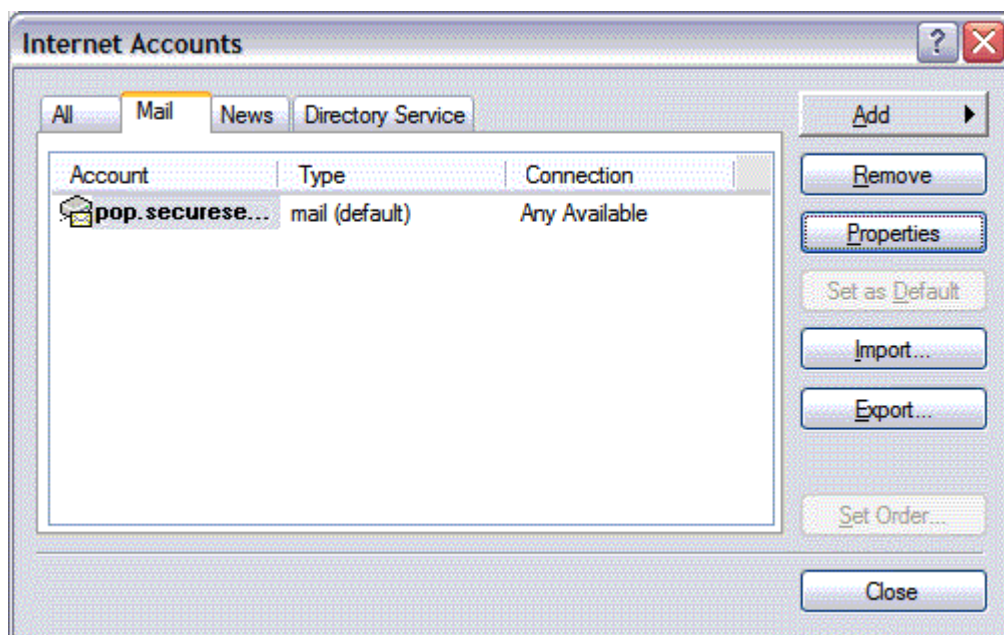
Log on using Secure Password Authentication (SPA)

< Back Next > Cancel

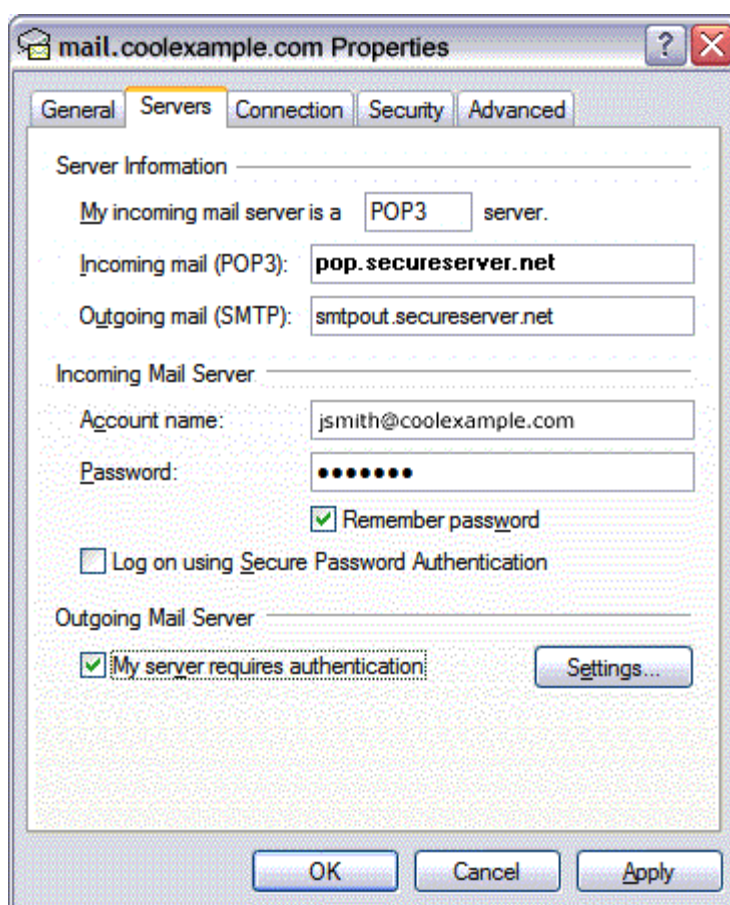
7. On the setup confirmaiton page, click **Finish**.



- On the Mail tab, select the account you just created and then click **Properties**.

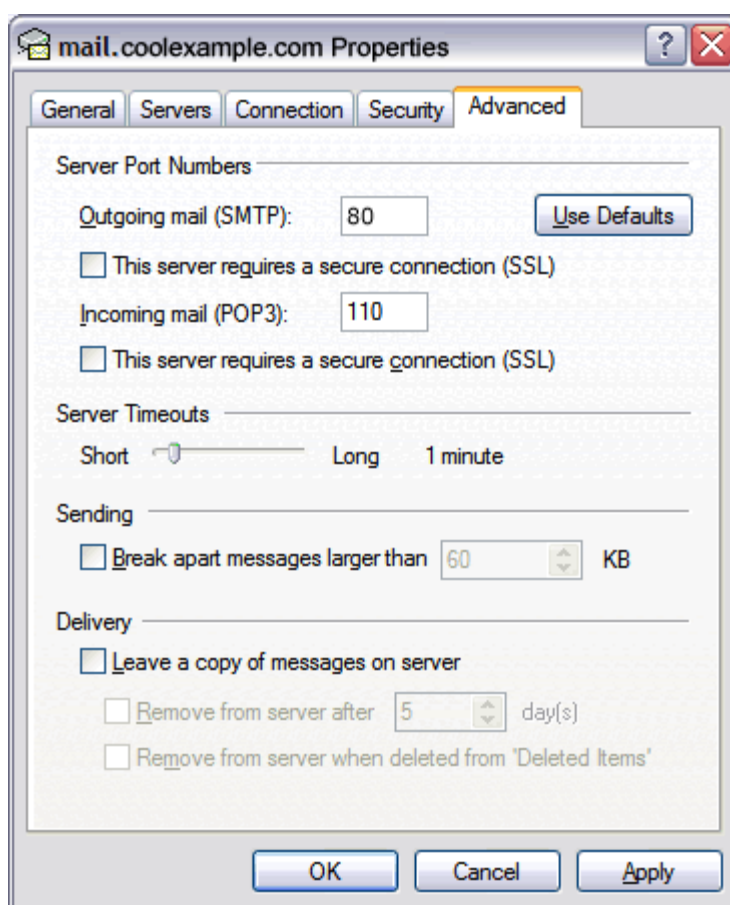


- Go to the **Servers** tab.
- Select **My server requires authentication**, and then click **Apply**.



11. Go to the **Advanced** tab.

12. In the Server Port Numbers section, change **Outgoing mail (SMTP)** to **80**, and then click **OK**.



13. (Optional) If you would like to keep a copy of your email messages stored on your email provider's servers, in the Delivery section, select **Leave a copy of messages on server**.

Your Outlook Express account is now set up. Click **Close** to close the Internet Accounts window and return to your Outlook Express.